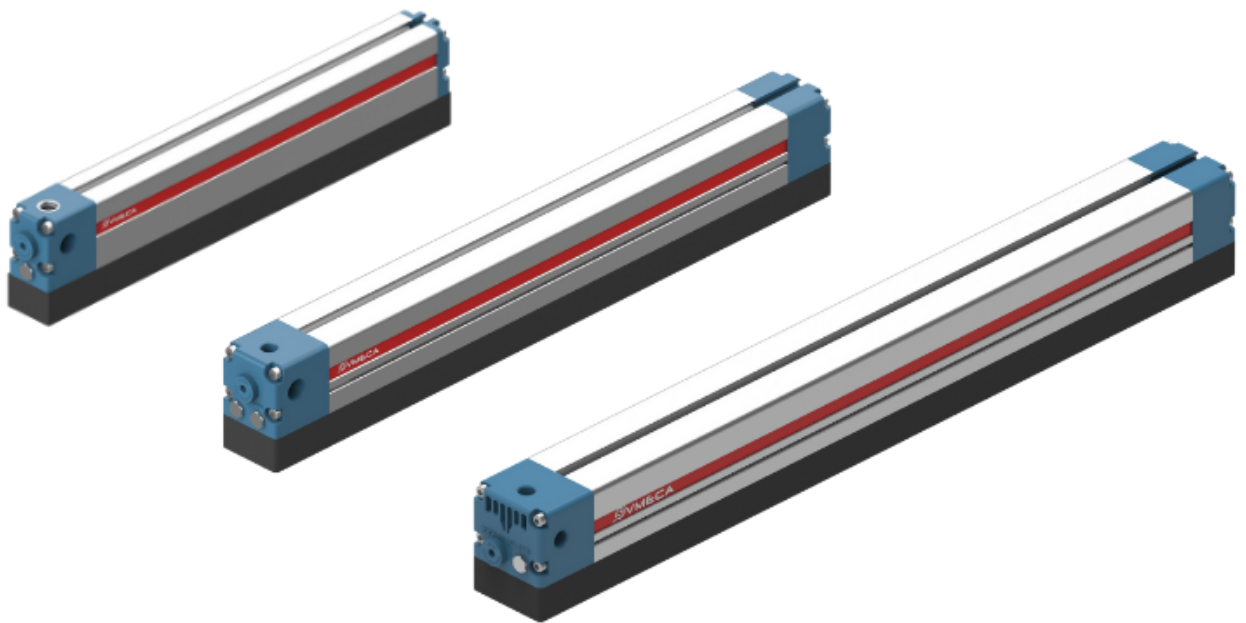
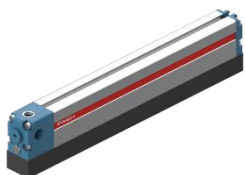


VMECA Vacuum Gripping System

# MINI VGRIP



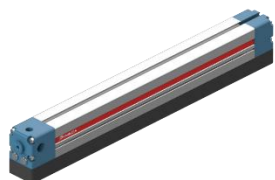
# INDEX



**Mini VGRIP – G 30 Series**

**Page 57**

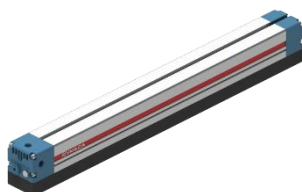
---



**Mini VGRIP – G 40 Series**

**Page 61**

---



**Mini VGRIP – G 50 Series**

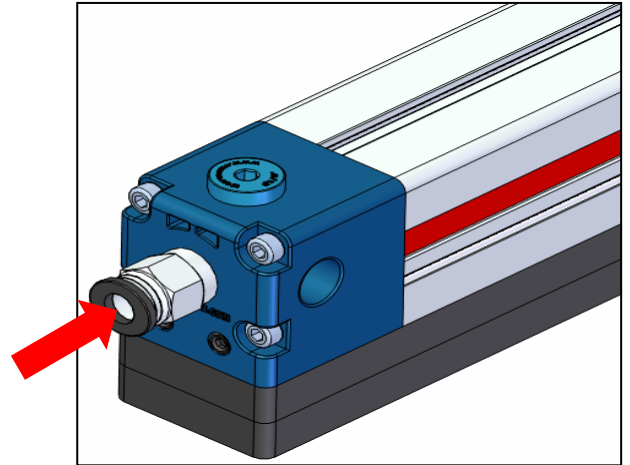
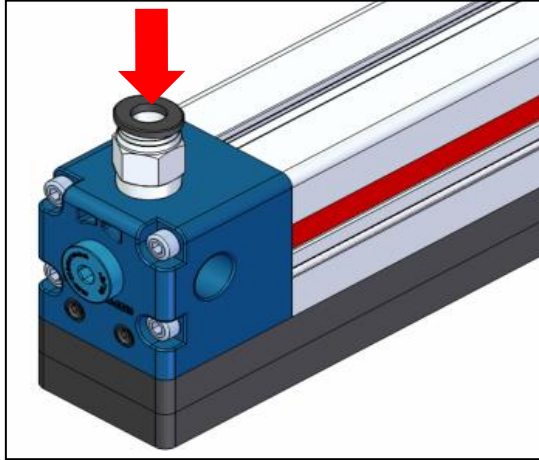
**Page 65**

---

## Features

### ▼ G 40 Series

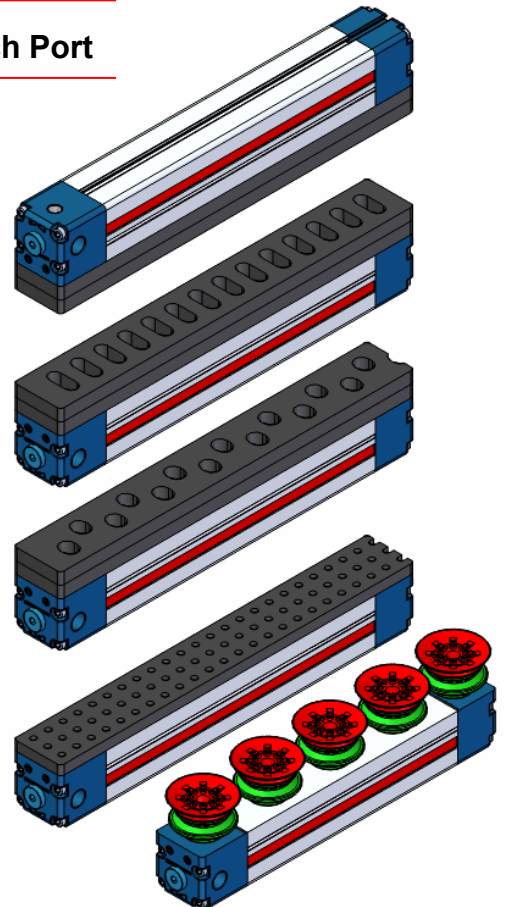
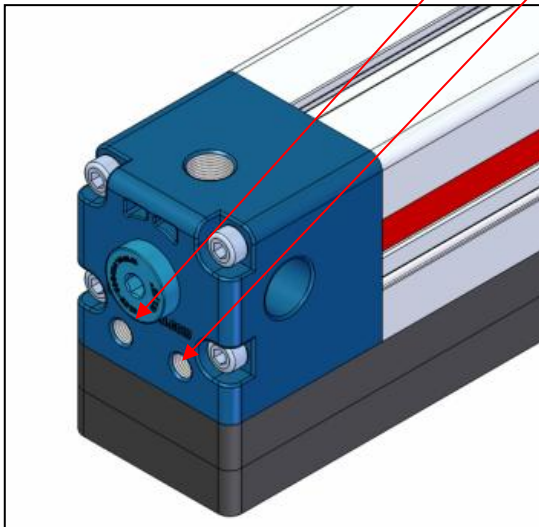
- ▶ Two air supply ports (top & side)



- ▶ Supports vacuum release and digital sensor

Vacuum Release Port

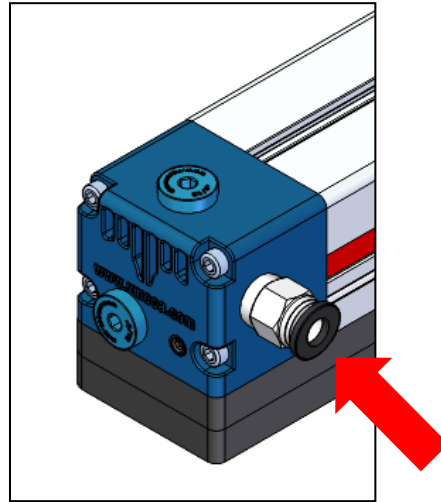
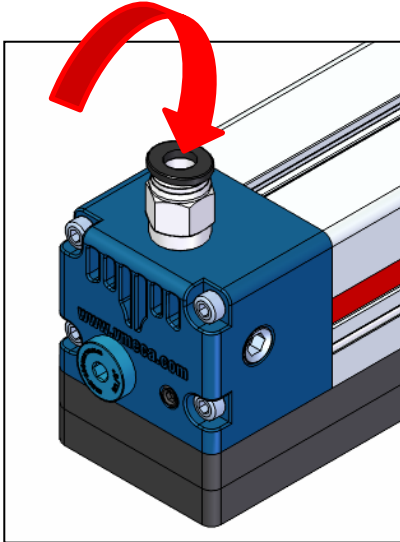
Vacuum Switch Port



Features

▼ G 50 Series

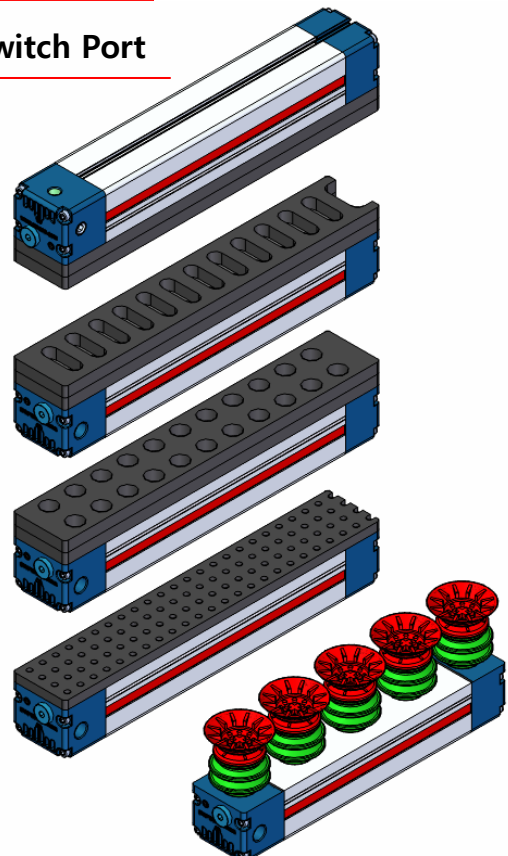
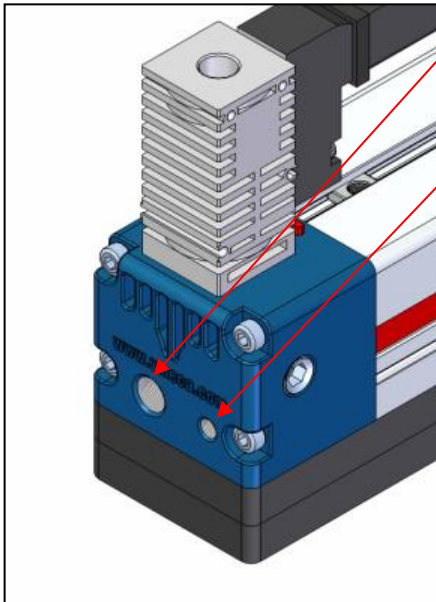
► Two air supply ports (top & side)



► Vacuum release and digital sensor available

Vacuum Release Port

Vacuum Switch Port



## Sponge type

- ▶ Various hole patterns
- ▶ Strong suction force

G40-EL



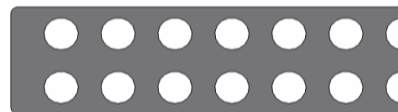
G50-EL



G40-ES



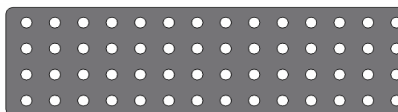
G50-ES



G40-ES-P1

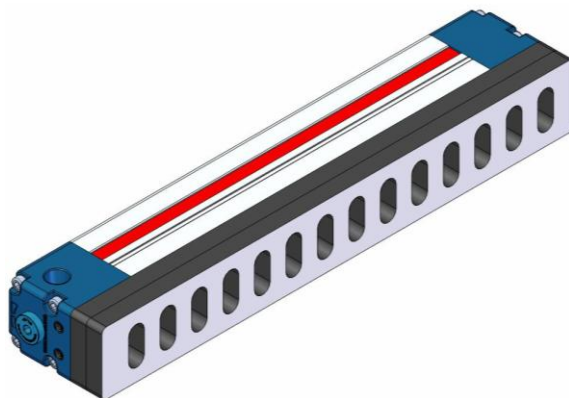
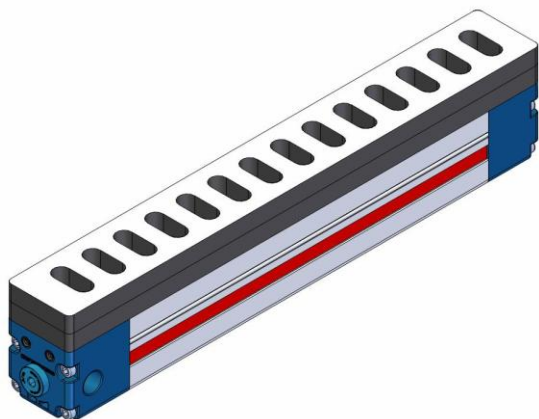


G50-ES-P1

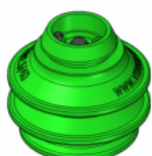


## Mark-Free Type

- ▶ Designed for mark-free applications
- ▶ Special fiber solution to prevent marking
- ▶ Available in mark-free material for all sizes



## Suction cup type



- EB1.5/20
- EB1.5/40
- EB2.5/20
- EB2.5/40

- EBL15-( )-A
- EBL15-( )-B
- EBL15-( )-C



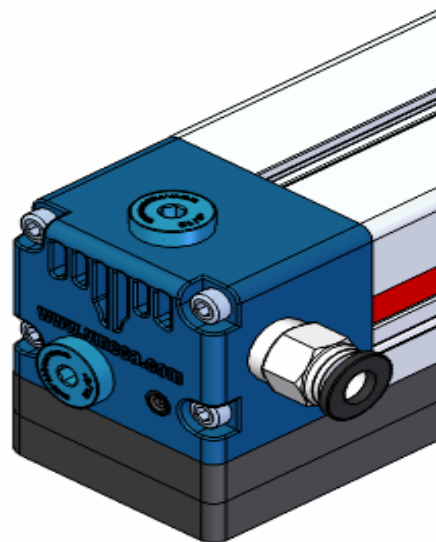
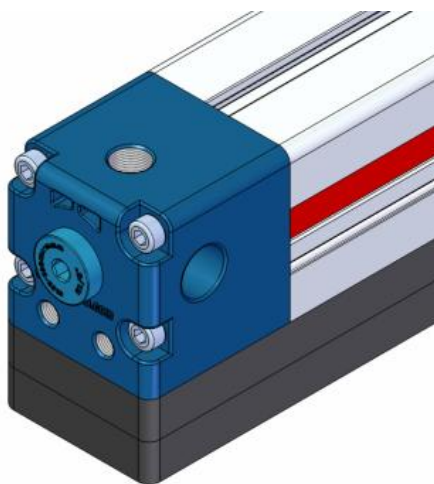
- EB1.5/20-MBL20-( )
- EB1.5/40-MBL40-( )



### Magic Suction Lips

Product Comparison: G40 & G50

Model	G40	G50
Compressed Air Port	G1/8"female x 2 ports	
Vacuum Release Port	M6 female	G1/8"female
Vacuum Cartridge	1 Vacuum Cartridge (standard)	2 Vacuum Cartridges (standard)
	Max. 2 Vacuum Cartridges	Max. 4 Vacuum Cartridges
Dead Zone	No Dead Zone	



## G30 Series Characteristics

Model	Air inlet Pressure Mpa (psi)	Air consumption N/m (scfm)	Max. Vacuum Flows N/m (scfm)	Max. Vacuum level -kPa (-mmHg)
G30X100-LC1...	0.6 (87)	83.5 (2.95)	111 (3.92)	90 (675)
G30X150-LC1...	0.6 (87)	83.5 (2.95)	111 (3.92)	90 (675)
G30X200-L1...	0.6 (87)	83.5 (2.95)	146 (5.16)	90 (675)
G30X250-L1...	0.6 (87)	83.5 (2.95)	146 (5.16)	90 (675)
G30X300-L1...	0.6 (87)	83.5 (2.95)	146 (5.16)	90 (675)
G30X400-L1...	0.6 (87)	83.5 (2.95)	146 (5.16)	90 (675)
G30X500-L1...	0.6 (87)	83.5 (2.95)	146 (5.16)	90 (675)
G30X600-L1...	0.6 (87)	83.5 (2.95)	146 (5.16)	90 (675)

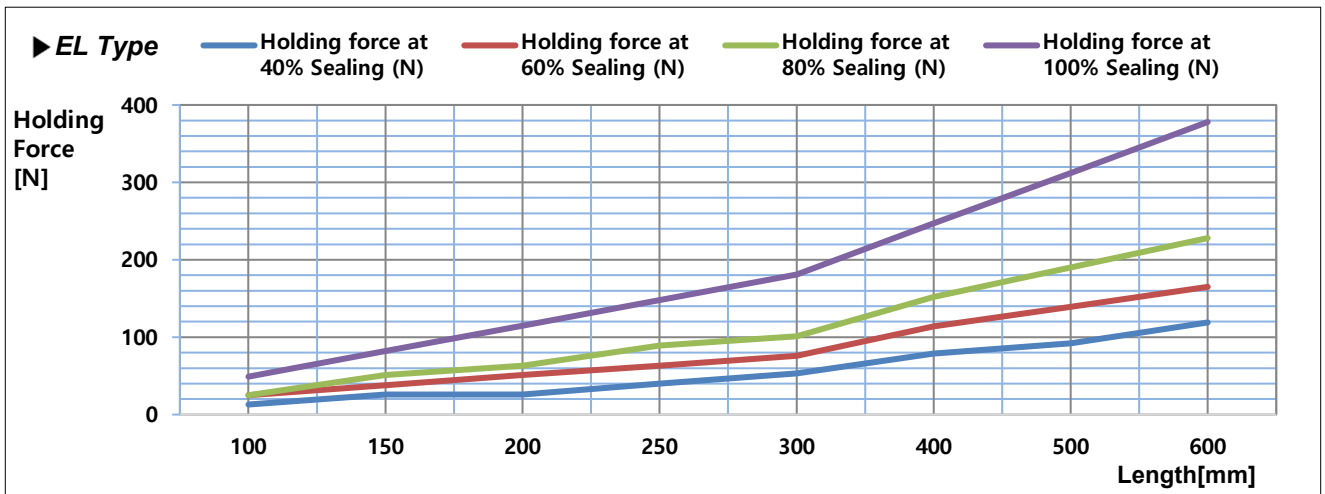
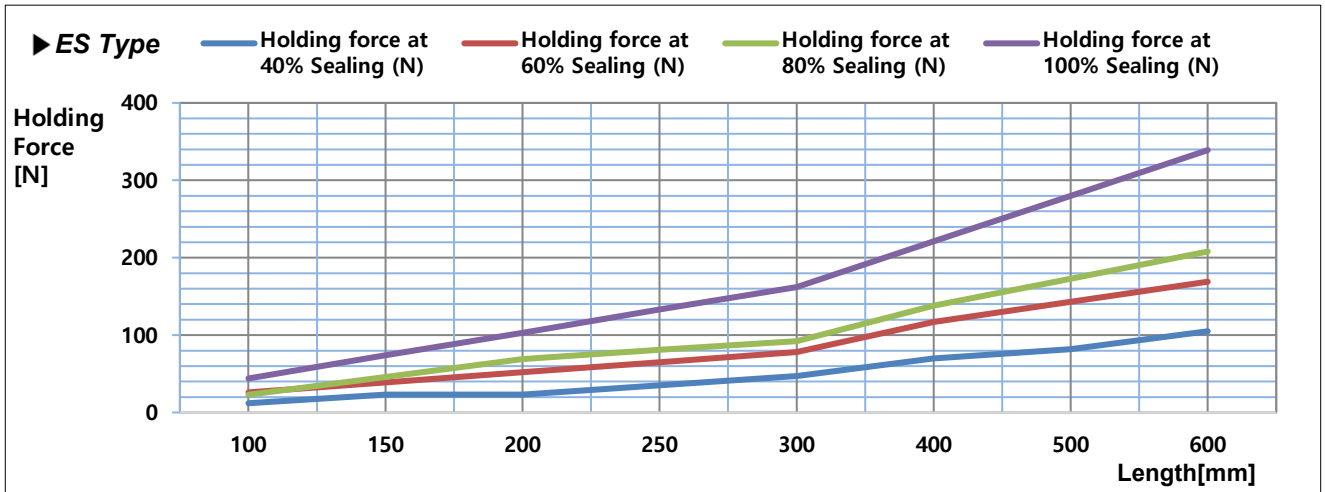
## G30 Series Holding Force (N) % according to the length (mm)

Model	Holding force at 40% Sealing (N)**	Holding force at 60% Sealing (N)**	Holding force at 80% Sealing (N)**	Holding force at 100% Sealing (N)**	Weight (Kg)*
G30X100-LC1-ES	12	26	23	44	0.16
G30X150-LC1-ES	23	39	46	74	0.24
G30X200-L1-ES	23	52	69	103	0.34
G30X250-L1-ES	35	65	81	133	0.42
G30X300-L1-ES	47	78	92	162	0.5
G30X400-L1-ES	70	117	138	221	0.67
G30X500-L1-ES	82	143	173	280	0.82
G30X600-L1-ES	105	169	208	339	0.98
G30X100-LC1-EL	13	25	25	49	0.16
G30X150-LC1-EL	26	38	51	82	0.24
G30X200-L1-EL	26	51	63	115	0.34
G30X250-L1-EL	40	63	89	148	0.42
G30X300-L1-EL	53	76	101	181	0.5
G30X400-L1-EL	79	114	152	247	0.67
G30X500-L1-EL	92	139	190	312	0.82
G30X600-L1-EL	119	165	228	378	0.98

\*\* Values may vary by workpiece surface and permeability. For reference only.

\*\* Data set does not include safety factors. Apply appropriate safety factors for actual applications.

G30 Series Holding Force (N) % according to the length (mm)

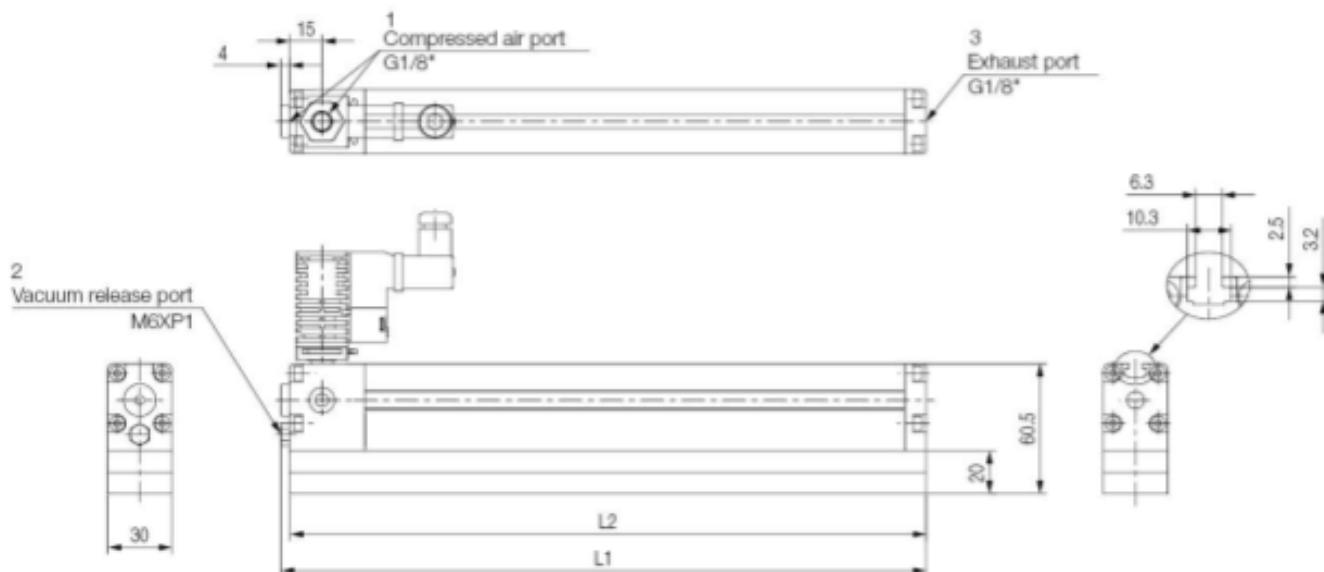


\*\* Values may vary by workpiece surface and permeability. For reference only.

\*\* Data set does not include safety factors. Apply appropriate safety factors for actual applications.

Dimension Information

▼ G 30 ... Series

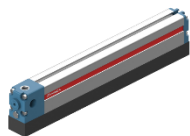


Measure unit : mm

Model	Length	Sponge Pad length	Air Control Valve
	L1	L2	Type*
G30X100-LC1-...	102.1	96.6	MS18
G30X150-LC1-...	150.6	146.6	MS18
G30X200-L1-...	200.6	196.6	MS18
G30X250-L1-...	250.6	246.6	MS18
G30X300-L1-...	300.6	296.6	MS18
G30X400-L1-...	400.6	396.6	MS18
G30X500-L1-...	500.6	496.6	MS18
G30X600-L1-...	600.6	596.6	MS18

## Ordering Information

## G 30 Series


**G 30 X 300 - L1 - ES1 - A3 - CL**

①
②
③
④
⑤
⑥

1. Width	Description	Ordering No.	ETC
	G series, Width 30mm	G30	
2. Length	Description	Ordering No.	ETC
	Length 100mm	100	
	Length 150mm	150	
	Length 200mm	200	
	Length 250mm	250	
	Length 300mm	300	
	Length 400mm	400	
	Length 500mm	500	
	Length 600mm	600	
3. Vacuum Cartridge Type	Description	Ordering No.	ETC
	VC252 – cartridges for length 100mm ~ 150mm	LC1	
	VC253 – cartridges for length 200mm ~ 600mm	L1	
4. Check Valve & Sponge Type	Description	Ordering No.	ETC
	Oval suction hole, For leakage / Non-porous objects	EL1	
	Oval suction hole, For non leakage / Porous objects	EL2	
	Round suction hole, For leakage / Non-porous objects	ES1	
	Round suction hole, For non leakage / Porous objects	ES2	
	Round suction hole (Ø5), For leakage / Non-porous objects	ES1-P1	
	Round suction hole (Ø5), For non leakage / Porous objects	ES2-P1	
	Smart efficiency valve, A Type, Round shape suction hole	AO	
	Smart efficiency valve, B Type, Round shape suction hole	BO	
	Smart efficiency valve, C Type, Round shape suction hole	CO	
	Smart efficiency valve, A Type, Oval shape suction hole	AL	
	Smart efficiency valve, B Type, Oval shape suction hole	BL	
	Smart efficiency valve, C Type, Oval shape suction hole	CL	
5. Air Control Valve	Description	Ordering No.	ETC
	No air control valve	Blank	
	Air control valve, AC110V	A1	
	Air control valve, AC220V	A2	
	Air control valve, DC24V	A3	
	Double Solenoid valve, AC110V	D1	
	Double Solenoid valve, AC220V	D2	
	Double Solenoid valve, DC24V	D3	
6. Valve Terminal	Description	Ordering No.	ETC
	Solenoid Terminal, DIN, No LW	DN	
	Solenoid Terminal, DIN, Lamp, No LW	DL	
	Solenoid Terminal, Conn, Lamp & 0.3m LW	CL	Only available with DC24V
7. Mark Free	Description	Ordering No.	ETC
	Standard (No mark free)	Blank	
	Mark free	A	

## G40 Series Characteristics

Model	Air inlet Pressure Mpa (psi)	Air consumption N/m (scfm)	Max. Vacuum Flows N/m (scfm)	Max. Vacuum level -kPa (-mmHg)
G40X150-LC1...	0.6 (87)	104 (3.6)	200 (7)	75 (563)
G40X200-LC1...	0.6 (87)	104 (3.6)	200 (7)	75 (563)
G40X300-L1...	0.6 (87)	104 (3.6)	362 (12.7)	75 (563)
G40X400-L1...	0.6 (87)	104 (3.6)	362 (12.7)	75 (563)
G40X500-L1...	0.6 (87)	104 (3.6)	362 (12.7)	75 (563)
G40X600-L1...	0.6 (87)	104 (3.6)	362 (12.7)	75 (563)

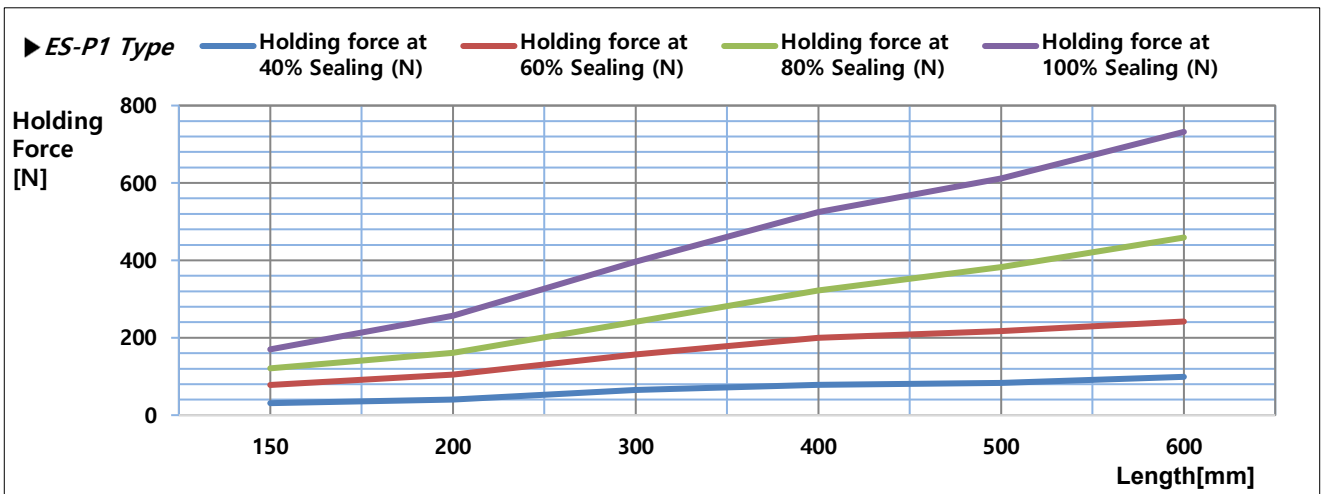
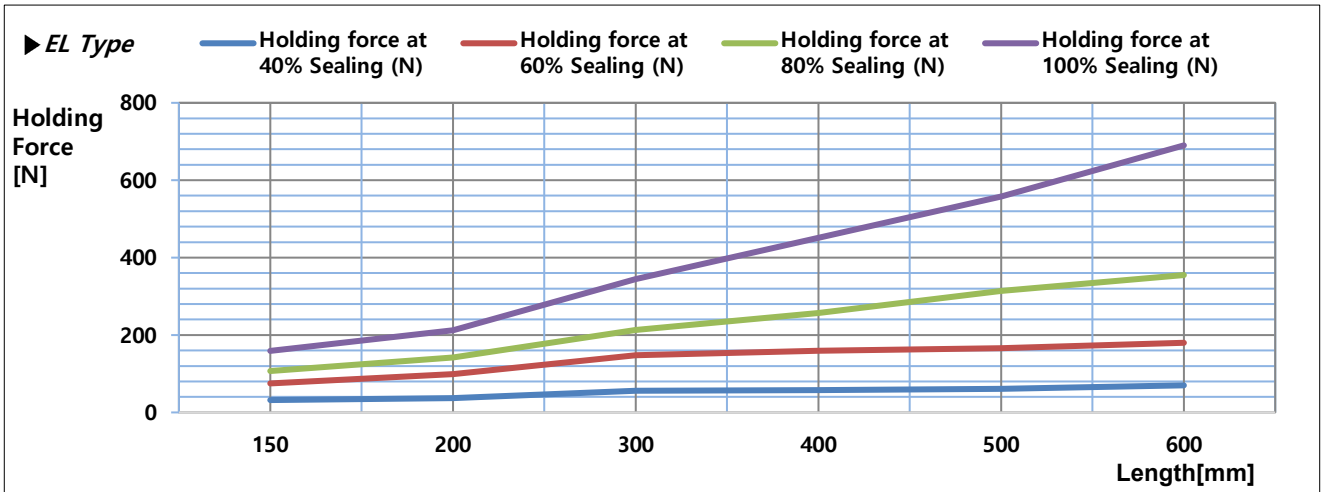
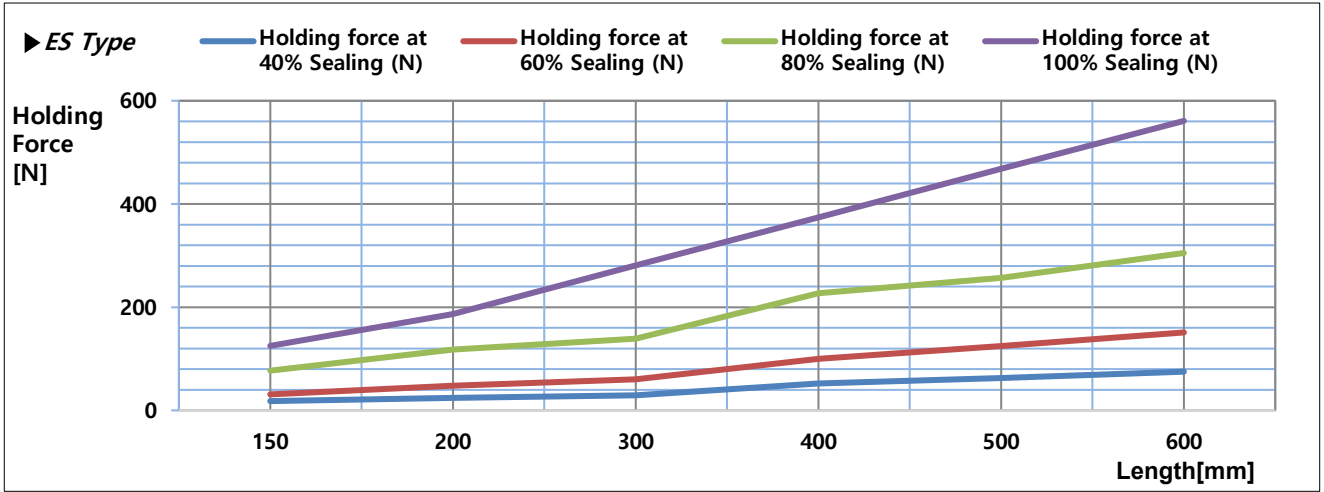
## G40 Series Holding Force (N) % according to the length (mm)

Model	Holding force at 40% Sealing (N)**	Holding force at 60% Sealing (N)**	Holding force at 80% Sealing (N)**	Holding force at 100% Sealing (N)**
G40X150-LC1-ES1...	18	31	77	125
G40X200-LC1-ES1...	24	48	118	187
G40X300-L1-ES1...	29	60	139	281
G40X400-L1-ES1...	52	100	227	374
G40X500-L1-ES1...	63	125	257	468
G40X600-L1-ES1...	75	151	305	561
G40X150-LC1-EL1...	32	75	107	159
G40X200-LC1-EL1...	37	99	142	212
G40X300-L1-EL1...	56	148	213	345
G40X400-L1-EL1...	58	159	257	451
G40X500-L1-EL1...	61	166	314	558
G40X600-L1-EL1...	70	180	355	690
G40X150-LC1-ES1-P1...	31	78	121	170
G40X200-LC1-ES1-P1...	40	105	161	257
G40X300-L1-ES1-P1...	65	157	241	397
G40X400-L1-ES1-P1...	78	200	322	525
G40X500-L1-ES1-P1...	83	217	383	612
G40X600-L1-ES1-P1...	99	242	459	732

\*\* Values may vary by workpiece surface and permeability. For reference only.

\*\* Data set does not include safety factors. Apply appropriate safety factors for actual applications.

G40 Series Holding Force (N) % according to the length (mm)

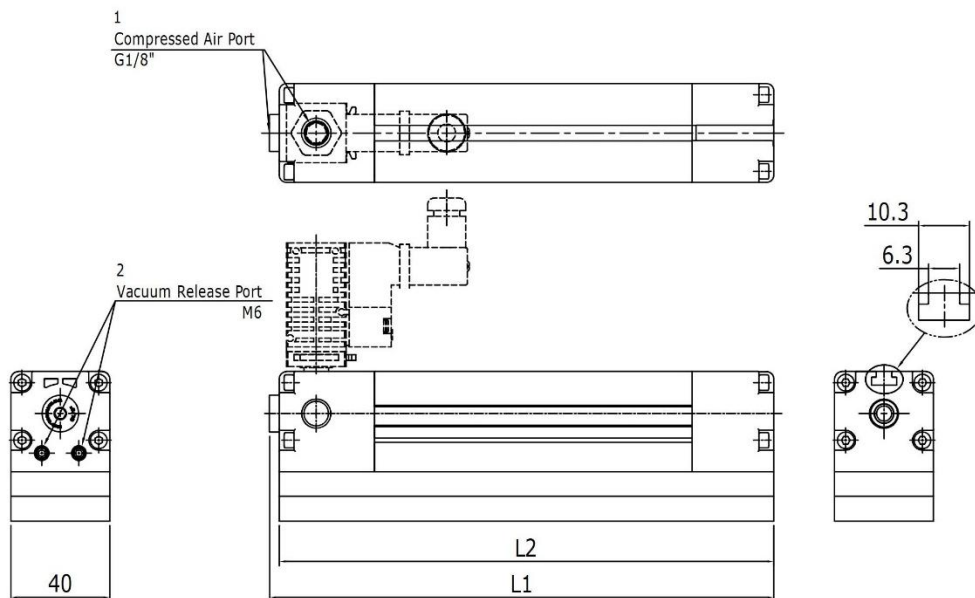


\*\* Values may vary by workpiece surface and permeability. For reference only.

\*\* Data set does not include safety factors. Apply appropriate safety factors for actual applications.

Dimension Information

▼ G 40 ... Series

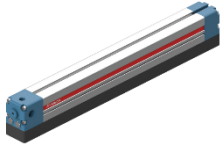


Measure unit : mm

Model	Length		Air Control Valve
	L1	Sponge Pad length L2	Type*
G40X150-LC1-..	159	155	MS18
G40X200-LC1-..	209	205	MS18
G40X300-L1-..	309	305	MS18
G40X400-L1-..	409	405	MS18
G40X500-L1-..	509	505	MS18
G40X600-L1-..	604	600	MS18

## Ordering Information

## G 40 Series



**G 40 X 300 - L1 - ES1 - A3 - CL**

①

②

③

④

⑤

⑥

1. Width	Description	Ordering No.	ETC
	G series, Width 40mm	G40	
2. Length	Description	Ordering No.	ETC
	Length 100mm	100	
	Length 150mm	150	
	Length 200mm	200	
	Length 250mm	250	
	Length 300mm	300	
	Length 400mm	400	
	Length 500mm	500	
	Length 600mm	600	
3. Vacuum Cartridge Type	Description	Ordering No.	ETC
	VCL302 – cartridges for length 100mm ~ 150mm	LC1	
	VCL303 – cartridges for length 200mm ~ 600mm	L1	
4. Check Valve & Sponge Type	Description	Ordering No.	ETC
	Oval suction hole, For leakage / Non-porous objects	EL1	
	Oval suction hole, For non leakage / Porous objects	EL2	
	Round suction hole, For leakage / Non-porous objects	ES1	
	Round suction hole, For non leakage / Porous objects	ES2	
	Round suction hole (Ø5), For leakage / Non-porous objects	ES1-P1	
	Round suction hole (Ø5), For non leakage / Porous objects	ES2-P1	
	Smart efficiency valve, A Type, Round shape suction hole	AO	
	Smart efficiency valve, B Type, Round shape suction hole	BO	
	Smart efficiency valve, C Type, Round shape suction hole	CO	
	Smart efficiency valve, A Type, Oval shape suction hole	AL	
	Smart efficiency valve, B Type, Oval shape suction hole	BL	
	Smart efficiency valve, C Type, Oval shape suction hole	CL	
5. Air Control Valve	Description	Ordering No.	ETC
	No air control valve	Blank	
	Air control valve, AC110V	A1	
	Air control valve, AC220V	A2	
	Air control valve, DC24V	A3	
	Double Solenoid valve, AC110V	D1	
	Double Solenoid valve, AC220V	D2	
	Double Solenoid valve, DC24V	D3	
6. Valve Terminal	Description	Ordering No.	ETC
	Solenoid Terminal, DIN, No LW	DN	
	Solenoid Terminal, DIN, Lamp, No LW	DL	
	Solenoid Terminal, Conn, Lamp & 0.3m LW	CL	Only available with DC24V
7. Mark Free	Description	Ordering No.	ETC
	Standard (No mark free)	Blank	
	Mark free	A	

**G50 Series Characteristics**

Model	Air inlet Pressure Mpa (psi)	Air consumption N/m (scfm)	Max. Vacuum Flows N/m (scfm)	Max. Vacuum level -kPa (-mmHg)
G50X150-LC2...	0.6 (87)	208 (7.2)	400 (14)	75 (563)
G50X200-LC2...	0.6 (87)	208 (7.2)	400 (14)	75 (563)
G50X300-L2...	0.6 (87)	208 (7.2)	764 (25.4)	75 (563)
G50X400-L2...	0.6 (87)	208 (7.2)	764 (25.4)	75 (563)
G50X500-L2...	0.6 (87)	208 (7.2)	764 (25.4)	75 (563)
G50X600-L2...	0.6 (87)	208 (7.2)	764 (25.4)	75 (563)

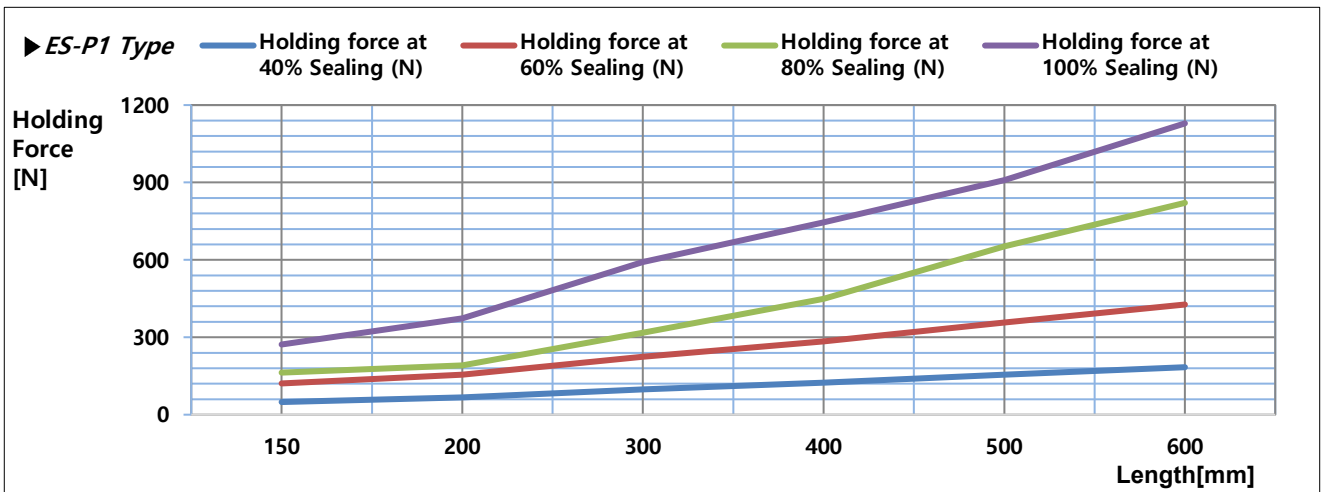
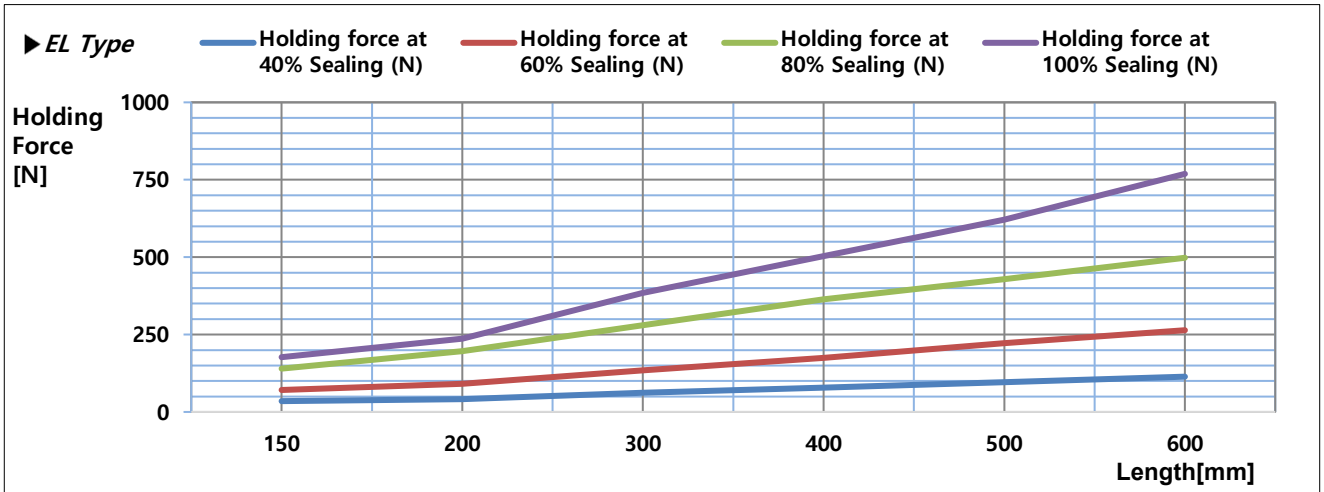
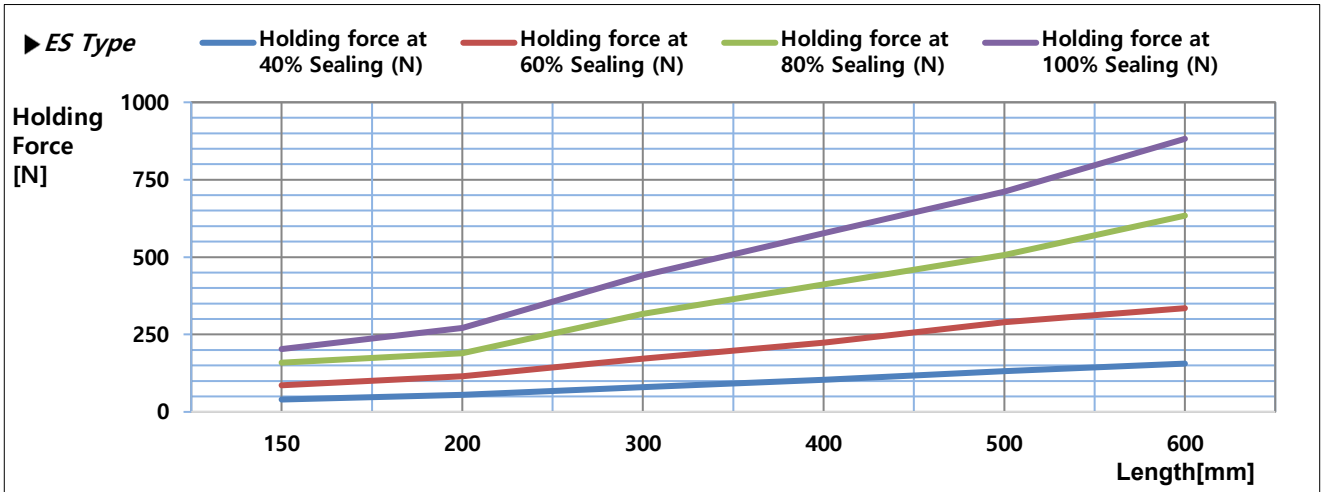
**G50 Series Holding Force (N) % according to the length (mm)**

Model	Holding force at 40% Sealing (N)**	Holding force at 60% Sealing (N)**	Holding force at 80% Sealing (N)**	Holding force at 100% Sealing (N)**
G50X150-LC2-ES1...	40	86	159	203
G50X200-LC2-ES1...	55	115	190	271
G50X300-L2-ES1...	80	172	317	441
G50X400-L2-ES1...	104	224	412	577
G50X500-L2-ES1...	132	290	507	712
G50X600-L2-ES1...	156	335	634	882
G50X150-LC2-EL1...	35	71	140	177
G50X200-LC2-EL1...	41	91	196	237
G50X300-L2-EL1...	62	134	280	384
G50X400-L2-EL1...	79	175	364	503
G50X500-L2-EL1...	96	222	429	621
G50X600-L2-EL1...	114	264	498	769
G50X150-LC2-ES1-P1...	49	121	163	272
G50X200-LC2-ES1-P1...	67	155	191	373
G50X300-L2-ES1-P1...	98	225	318	592
G50X400-L2-ES1-P1...	124	284	449	745
G50X500-L2-ES1-P1...	155	357	653	909
G50X600-L2-ES1-P1...	184	427	821	1129

\*\* Values may vary by workpiece surface and permeability. For reference only.

\*\* Data set does not include safety factors. Apply appropriate safety factors for actual applications.

G50 Series Holding Force (N) % according to the length (mm)

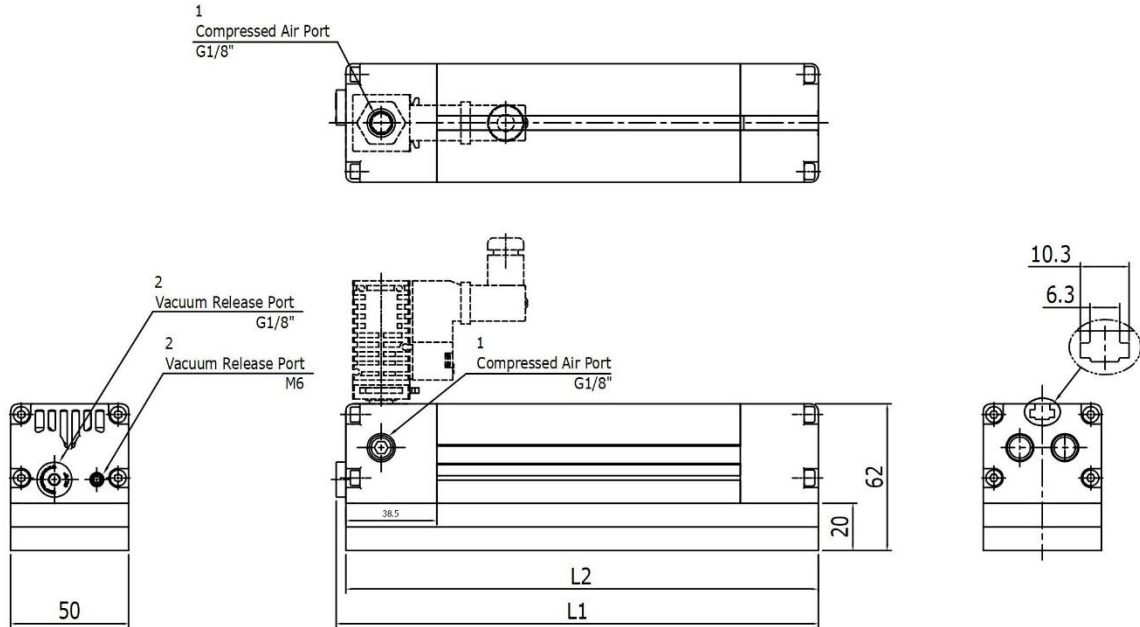


\*\* Values may vary by workpiece surface and permeability. For reference only.

\*\* Data set does not include safety factors. Apply appropriate safety factors for actual applications.

Dimension Information

▼ G 50 ... Series

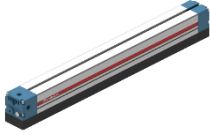


Measure unit : mm

Model	Length	Sponge Pad length	Air Control Valve
	L1	L2	Type*
G50X150-LC2-..	159	155	MS18
G50X200-LC2-..	209	205	MS18
G50X300-L2-..	309	305	MS18
G50X400-L2-..	409	405	MS18
G50X500-L2-..	509	505	MS18
G50X600-L2-..	609	605	MS18

## Ordering Information

## G 50 Series



**G 50 X 300 - L1 - ES1 - A3 - CL**

①

②

③

④

⑤

⑥

1. Width	Description	Ordering No.	ETC
	G series, Width 50mm	G50	
2. Length	Description	Ordering No.	ETC
	Length 100mm	100	
	Length 150mm	150	
	Length 200mm	200	
	Length 250mm	250	
	Length 300mm	300	
	Length 400mm	400	
	Length 500mm	500	
	Length 600mm	600	
3. Vacuum Cartridge Type	Description	Ordering No.	ETC
	VCL302 – cartridges for length 100mm ~ 150mm	LC1	
	VCL303 – cartridges for length 200mm ~ 600mm	L1	
4. Check Valve & Sponge Type	Description	Ordering No.	ETC
	Oval suction hole, For leakage / Non-porous objects	EL1	
	Oval suction hole, For non leakage / Porous objects	EL2	
	Round suction hole, For leakage / Non-porous objects	ES1	
	Round suction hole, For non leakage / Porous objects	ES2	
	Round suction hole (Ø5), For leakage / Non-porous objects	ES1-P1	
	Round suction hole (Ø5), For non leakage / Porous objects	ES2-P1	
	Smart efficiency valve, A Type, Round shape suction hole	AO	
	Smart efficiency valve, B Type, Round shape suction hole	BO	
	Smart efficiency valve, C Type, Round shape suction hole	CO	
	Smart efficiency valve, A Type, Oval shape suction hole	AL	
	Smart efficiency valve, B Type, Oval shape suction hole	BL	
	Smart efficiency valve, C Type, Oval shape suction hole	CL	
5. Air Control Valve	Description	Ordering No.	ETC
	No air control valve	Blank	
	Air control valve, AC110V	A1	
	Air control valve, AC220V	A2	
	Air control valve, DC24V	A3	
	Double Solenoid valve, AC110V	D1	
	Double Solenoid valve, AC220V	D2	
	Double Solenoid valve, DC24V	D3	
6. Valve Terminal	Description	Ordering No.	ETC
	Solenoid Terminal, DIN, No LW	DN	
	Solenoid Terminal, DIN, Lamp, No LW	DL	
	Solenoid Terminal, Conn, Lamp & 0.3m LW	CL	Only available with DC24V
7. Mark Free	Description	Ordering No.	ETC
	Standard (No mark free)	Blank	
	Mark free	A	